

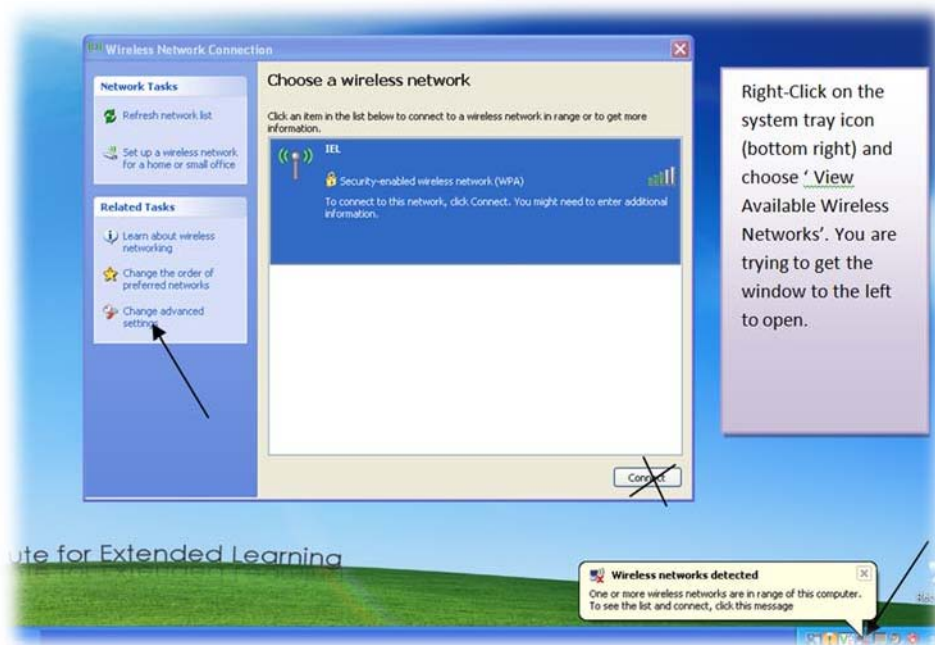
IEL Wireless Setup – Windows XP

- Note, new students will in fact need to do the password reset steps (step 8) located here: <https://ww2.spokanefalls.edu/Login.asp?Prog=SA>
In regards to wireless access all students are considered new students starting Summer '10.

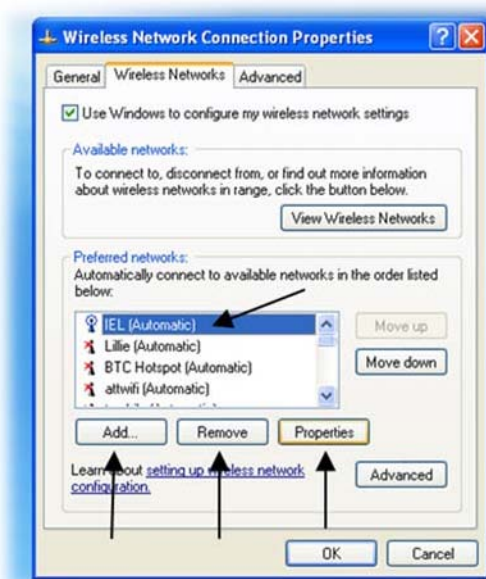
The following settings will allow a *non CCS/IEL-owned laptop* to be configured for using the IEL wireless network.

Staff: IEL provided laptops are pre-configured for access, your personal laptops require the following settings but at the username/password prompt enter information in the IEL\Username + Password format.

⇒ If you have made other attempts to set the IEL network profile up and continue to have issues, jump to step 9.



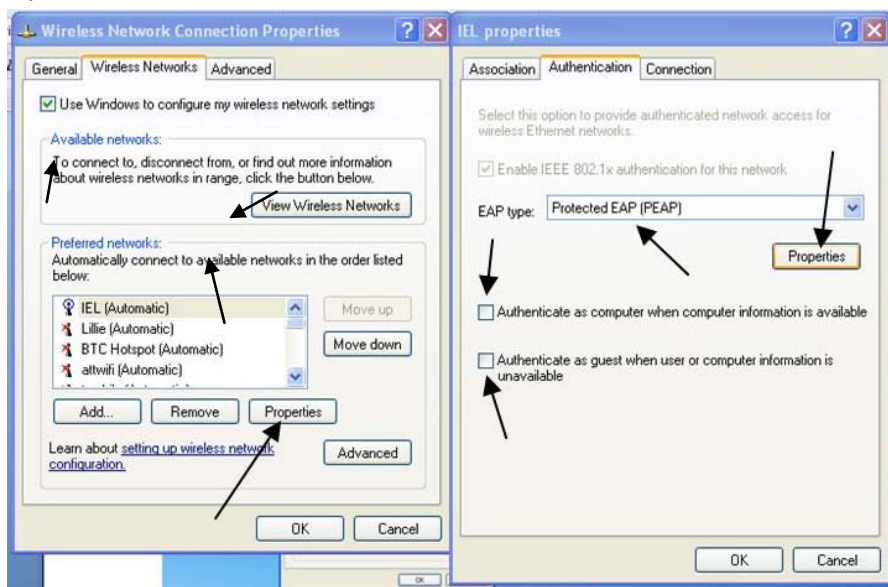
1. Right-click on the Windows XP wireless icon and choose 'View Available Wireless Networks'. You are looking for the 'Wireless Network Connection' dialog box. The wireless network broadcasts itself but do not choose 'Connect' – you will need to make more changes. Instead choose 'Change advanced settings'.



2.

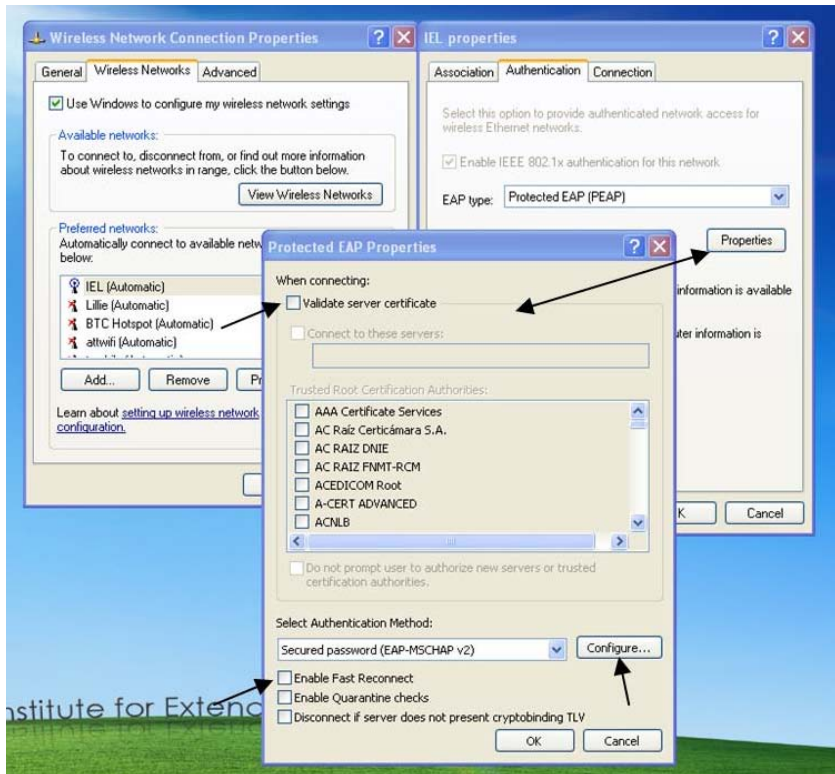
If you have the network listed already (as it is here) you will need to choose 'Properties'. If 'IEL' is not listed, then choose 'Add'.

If you have issues and want to start over, choose 'Remove' then re-add the network ('Add').

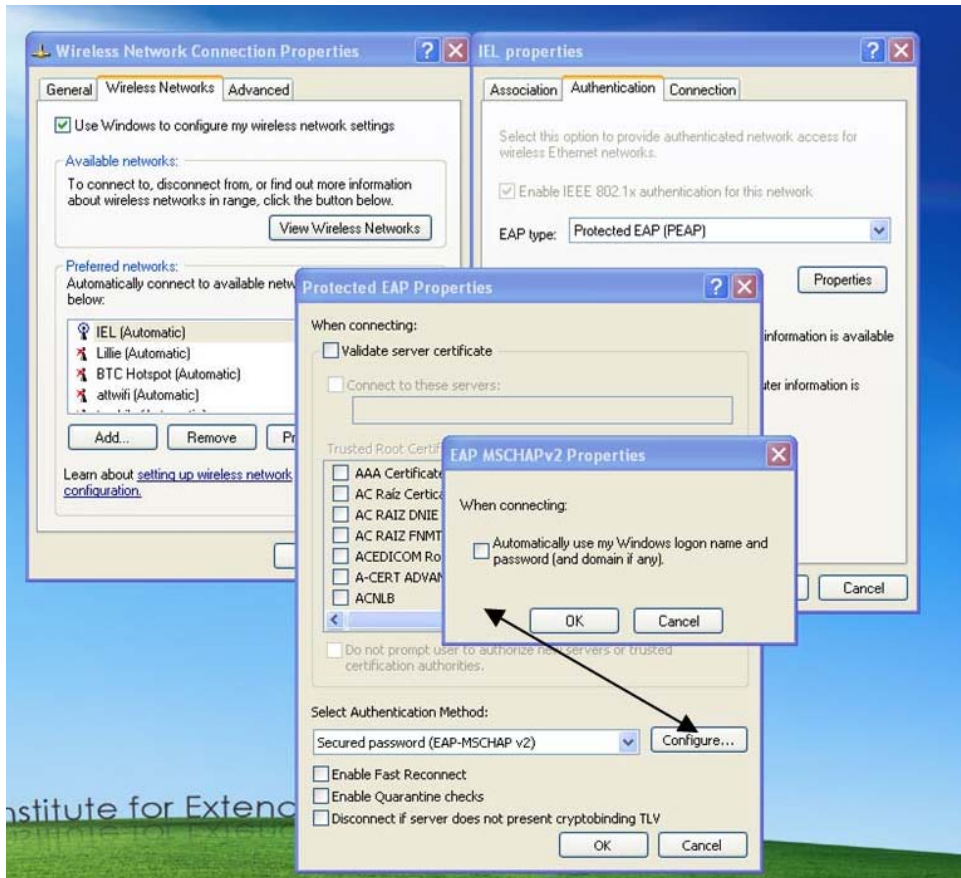


3.

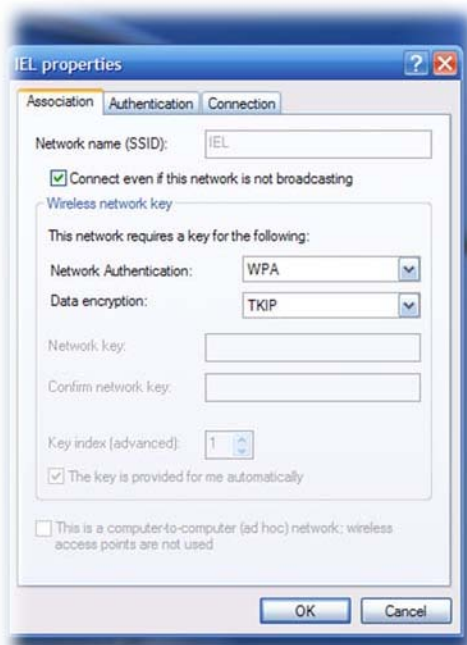
Under the 'Wireless Networks' tab (after you have added the 'IEL' network) choose 'Properties' and on the 'Authentication' tab adjust the options to match these settings exactly. Choose 'Properties' under EAP type:



4. Under 'EAP type' Properties make the settings match *exactly* what is shown above (missing one option could potentially keep the settings from working). Do not hit, 'OK' – instead hit 'Configure':

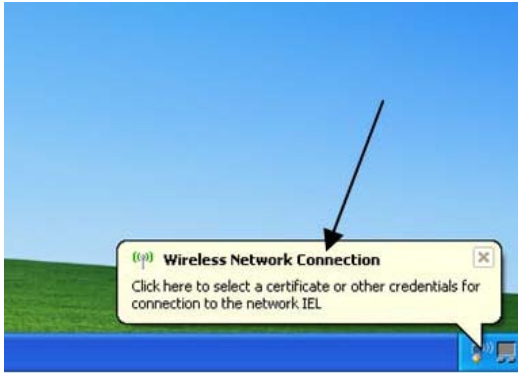


5. Uncheck this option under EAP MSCHAPv2 Properties. Hit 'OK' twice.



6. Under the 'Wireless Networks' tab choose the 'Association' tab and ensure that the settings

match. Hit 'OK' to close this dialog box then 'OK' to close the primary 'Wireless Network Connection Properties' dialog box.



7.

Wait for a moment and your laptop will automatically try to connect to the wireless network 'IEL' (this timeframe can vary depending on network traffic and your laptop, wait a minute or more if necessary). After a bit the above dialog box/info balloon will appear. Click anywhere on the balloon.



8.

Enter your username and password for the final step of authentication. The username is in the FirstNameFirstInitialLastFourofSID format (JaneT1234 for example). In addition* the username can be entered in a number of formats: STU\JaneT1234, JaneT1234@STU, stu.sfcc.spokane.cc.wa.us\JaneT1234.

The STU\JaneT1234 is the easiest format to remember for most users and technically speaking, they are the same thing – if you have issues it will be the network settings or a password issue. Punctuation DOES NOT MATTER for the username, it is only specified here for clarity.

* note, some users may not be presented with all three boxes (just 'User name' and 'Password').

In that case, you can specify the 'STU' domain with STU\username. *In the above example, using STU\JaneT1234 and leaving the third box (Logon domain) empty would work.*

Your password is your SID. It is NOT required to be changed, since this password is only used for IEL Wireless and the SFCC library resources when at home (<http://library.spokanefalls.edu/databases/index.stm>) then it might be wise to leave it as your SID.

However, if you are having trouble with your password you can use the reset tool provided by SFCC here: <https://ww2.spokanefalls.edu/Login.asp?Prog=SA>

If you have trouble with the reset tool **DO NOT** contact SFCC support, instead contact your instructor or center manager and inform them you are having trouble with your wireless username and password. Provide your full name and SID and they will contact IEL Technical Support.

9. If you have trouble with the wireless settings or have previously attempted to connect to the 'IEL' wireless network you may find that starting over is the easiest option. Especially if you repeatedly used the wrong username/password combination. Often the settings can get 'stuck' and your laptop will try the same configuration over and over, regardless of whether or not it works (is more of an issue with Windows XP and less so with Vista/Windows 7).

To start over, get to Step 2 and instead of adding the network REMOVE/DELETE any existing networks called 'IEL'. Restart your machine and then start at Step 1.

Staff: If you are having trouble with the wireless network on an IEL laptop it can be helpful to plug the laptop into a wired (from the wall plate) connection and rebooting the machine a few times. Laptops not used that frequently may need to get updated settings from the network servers. This solves most login/wireless issues for laptops.